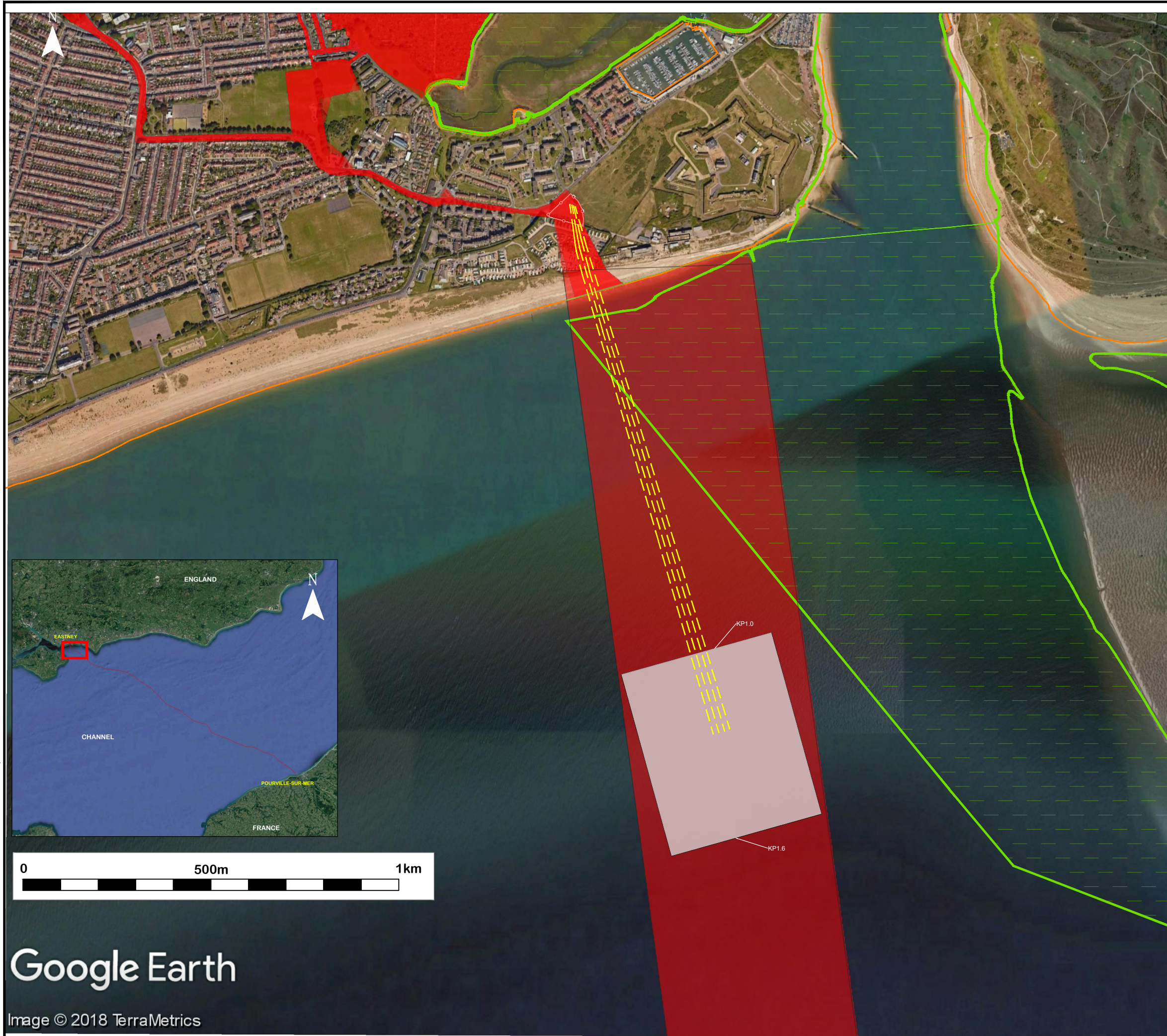


File name \\UK.WSPGROUP.COM\CENTRAL DATA\PROJECTS\62100XXX\62100616 - AQUIND VO NO.3\IE MODELS AND DRAWINGS\300 - SITE\340 - TASK 9 MARINE ROUTE\CURRENT\ENVIRONMENTAL STATEMENT\UK\REV 1\FIGURE 3.3 UK LANDFALL.DWG



**KEY**

- APPROXIMATE HDD DUCT LOCATIONS
- MARINE CABLE CORRIDOR/ORDER LIMITS
- ENVELOPE FOR HDD EXIT (KP1.0-KP1.6)
- MHWS
- SPECIAL AREA OF CONSERVATION

**Note:** Whilst HDD exit shown as KP1.25, the final position could be at any location between KP1.0 and KP1.6 depending on final design hence envelope shown

Infrastructure Planning (Environmental Impact Assessment) Regulations 2017 - Regulation 5(2)(a)

REV	DATE	BY	DESCRIPTION	CHK	APP
01	01/10/2019	SMA	FIRST ISSUE	CDL	CDL

DRAWING STATUS: **FINAL**



WSP House, 70 Chancery Lane, London, WC2A 1AF, UK  
T+ 44 (0) 207 314 5000, F+ 44 (0) 207 314 5111  
wsp.com

CLIENT:

PROJECT:  
**AQUIND Interconnector**

TITLE:  
**Figure 3.3 - UK Landfall**

SCALE AT A3: 1:10000	CHECKED: CDL	APPROVED: CDL
PROJECT No: EN020022	DESIGNED: SA	DRAWN: SA
DRAWING No: EN020022-ES-3.3		DATE: 01/10/2019
		REV: 01

© WSP UK Ltd